



Bewator Granta

Security Management System



The Granta Philosophy

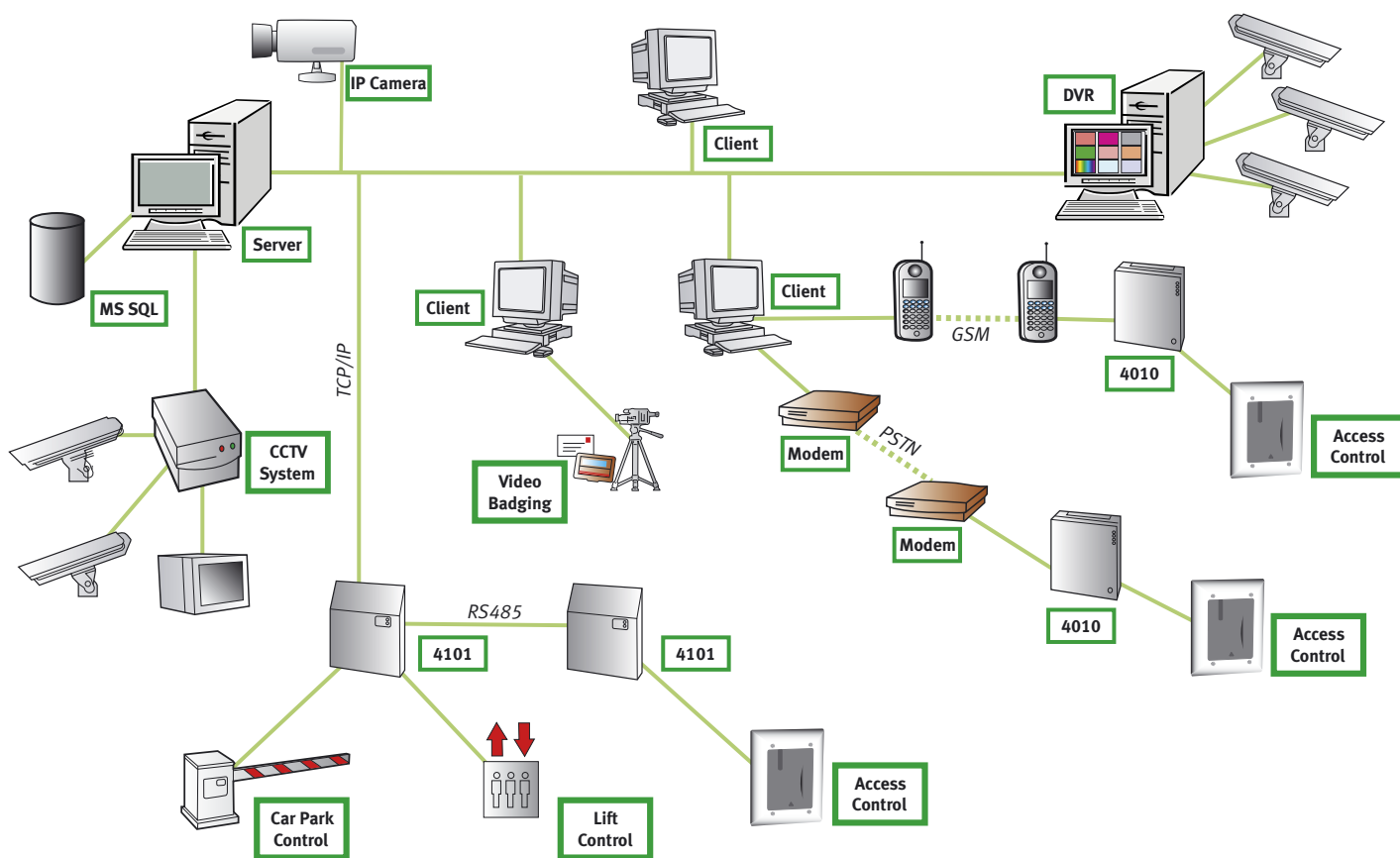


Efficient running of your organisation is your principal concern. The security of staff, property and assets must be guaranteed. To ensure business continuity you need a system to deliver your security and building management requirements now and in the future. Granta has the flexibility to change and grow in line with your business.

Regardless of system size, once installed, it offers round the clock protection, enabling you to control personnel and vehicles, manage visitors, control and monitor CCTV systems, protect staff, assets and even remotely administer and secure sister sites around the world.

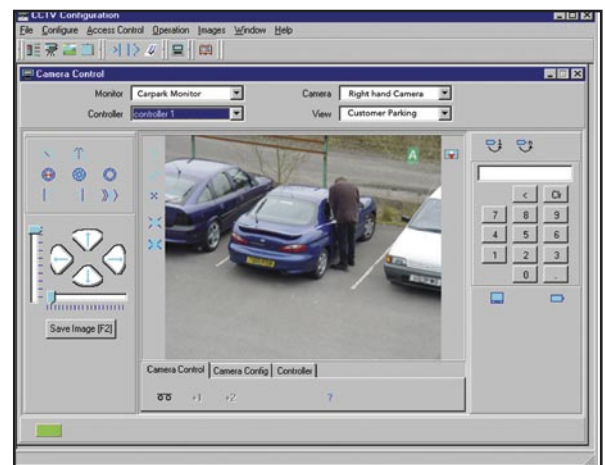
Thanks to its powerful scalability, Granta has proven ideal across all industries, government bodies, banks and airports. Granta can protect 4 doors just as well as 2000 doors and as a small company gets bigger and spreads itself over many sites, so Granta will expand with it, growing all the time thanks to its modular design.

A process of continual development has provided an upgrade path for Granta users since 1992 – systems installed in 1992 are still functioning now with up-to-the-minute features and performance.



Granta a world leader in security management

- **Scalability** - Flexibility is at the heart of the Granta philosophy. The modular concept of both hardware and software allows the user, to tailor the system to your needs now, but allows for future expansion. As your business grows, additional modules and controllers can easily be added to meet future demands. A process of continual development has provided an upgrade path for Granta users since 1992 – systems installed in 1992 are still functioning now with up-to-the-minute features and performance.
- **Saves money** - From simple systems for small buildings and out-stations to fully integrated networks in your headquarters, Granta will provide a cost-effective solution. Single and multi-site operations provide up to 75,000 cardholders with our unique Cotag® Hands-Free technology. Granta also supports Proximity, Magnetic Swipe and Biometric technologies – you can even save money by integrating Granta with 3rd party readers already in installed.
- **Hands-Free access control** - Granta provides the most cost-effective way of implementing long range reading solutions with all the associated benefits that this brings to your company.
- **Integration** - Your security is easier to control when it managed from one source. Why struggle with separate systems from different manufacturers – each with their own training manuals, training sessions and technical helpdesks. Granta integrates CCTV, intruder alarms and other systems all from the access control PC.
- **Ease of use** - An over-used term these days, however Granta really is. It is designed for use by security staff and not IT specialists. Your existing staff can therefore quickly and easily utilise its full range of features.



Granta System

Hardware

Controllers

Granta offers a choice of 2 door and 8 door modular controllers. Specific application modules allow Cotag reading heads or any industry standard cards and readers to be used. Granta's shared RF design allows for the most cost effective Hands-Free solution by integrating the reader onto the controller itself.

Granta provides an integrated powerful INPUT / OUTPUT functionality called CLIC (Configurable, Logical, Input/Output Control). This allows intelligent monitoring and control of 3rd party systems and goes far beyond the simple alarm handling of most other systems.

Granta system hardware employs a robust RS 485 communication protocol to ensure integrity of data from the software to the control panels and from the panels to the software for accurate commands and transaction reporting. Systems can also be built over a TCP/IP networks, dial up modems (including GSM) or a combination of all three communications methods on the same system for complete flexibility.

Software

Two versions of software are available for Granta;

Granta Primo

Granta Primo software is often used in less complex installations requiring only basic access control functions and where the user wishes to deploy Granta hardware without incurring higher software costs. Granta Primo is specifically designed to be easy to learn and operate and is appreciated where there are frequent changes of system administrator who need to develop operational efficiency fast with minimal training.

Primo still allows you to manage multiple doors and thousands of personnel and produce transaction reporting for management review. As companies needs grow Primo is fully upgradeable to Granta SQL, without hardware redundancy.

Granta SQL

Granta SQL is a comprehensive suite of security management software based on industry standard Microsoft SQL database. This modular package consists of the core access control software with separately licensable application software to meet specific user needs. The software is available in multiple languages and is fully password protected to allow the system to be used by many different levels of operator according to their function and seniority. Granta SQL allows multiple PC workstations to be connected via your network, allowing for distributed monitoring and control of the system across up to 10000 separate remote sites. To facilitate management control Granta provides comprehensive reports for clear decision-making.





Alarm Graphics – Graphical control & representation of alarm events - provides you with an audible warning and graphical site plans that you can easily design yourself in order to identify and process system alarm events, giving a simple visual representation of the system to the user. Should an alarm event occur the operator can immediately identify where it is and take action. System control functions are also available, allowing doors to be manually overridden, security lights turned on etc.

Video Badging – Integrated photo ID badge production - provides processing of electronically stored images, either from an integrated camera or stored files. The badge design software can combine these images with company logos, fixed text and database fields to generate the required picture and variable text. These may

then be added to ISO standard cards or adhesive labels via a dye sublimation printer.

Card Image Monitor – allows stored images of enrolled cardholders to be displayed when the card is read at a specific access point. An operator can verify this directly or via a CCTV camera and can then decide whether or not to challenge the cardholder.

Visitor Manager – allows visitors to be logged into the system in advance and badges then printed on arrival. Access levels within the system can be restricted as required and validated to hourly intervals. A monitor screen shows who is due to arrive, who is on site, the name of their host and who has logged out. This option also can deliver a comprehensive range of management reports.

X-Link – an event-processing tool for integrating 3rd party systems. This can transfer events from the security system via various communications media (e.g. email, SMS, paging etc) to other applications in real time.

CCTV Manager - allows CCTV systems control directly from within Granta via a virtual keyboard. As Granta monitors events on the access control system, commands via RS232 can be directly sent to the CCTV system without operator intervention; useful for alarm events.

DVR Manager – Controls digital video recording allowing system events to trigger multiple record sequences, including pre-recording. Recorded sequences can be played back through the main access control screens (Including Alarm Graphics).

Database Partitioning – controls the separation of data for use by different companies on the same system. Ideal for multi-tenanted buildings. Partitions can be grouped together to give higher levels of administrative control.



Card reading technology

The Granta system, controllers have the capability to work with any reading technology you wish to deploy in your organisation, for example Mifare, EM, Magstripe, and Cotag. This means that Granta is perfect as an upgrade using existing cards and readers or select the latest smart card technology and combine multiple applications on a single credential.

Bewator recommends our patented Cotag reading technology as a perfect front end to compliment the Granta Security management system. Specifically the designed with proximity and hands free technology built into the controllers this is the reading technology of choice for organisations which need to cater for able bodied and disabled staff and visitors, vehicle control an asset management.

Hands-Free

Hands-Free access control - Granta provides the most cost-effective way of implementing long range reading solutions with all the associated benefits that this brings to your organisation.



HF100 Granta Reading Head

Discrete but very powerful and designed to provide unrivalled ease of access, the Hands-Free Reading Head gives up to 1m reading range and makes the ideal choice for high throughput access doors, disabled access, parking barriers and warehousing.

The lowest cost/range ratio of any Reading Head on the market makes this our most popular long range product

Cotag® 270 Loop Coupler

The ultimate in user friendly access control and featuring our patented Cotag® Hands-Free technology. A simple wire loop can be buried in the ground or fitted around door openings providing up to 2 metres reading range using Active cards and tags.

The technology of choice for healthcare systems and asset management



Glass Reading Heads

Bewator's patented Cotag® Hands-Free technology has progressed with the introduction of all Glass Reading Heads. Specifically designed for use in high profile customer facing environments where aesthetics, style and corporate customisation / identity is required. Glass Reading Heads offer up to 80cms reading range, providing architects, property owners and facilities managers a new concept to security management systems not previously available.

If it has to be Proximity... Bewator offers more!

Proximity Reading technology is normally in the 1cm to 10cm reading range. However, when compared to other industry standard Proximity Technologies available, the Bewator solution offers superior performance – up to 40cm on our most popular reading heads. With the ability to mix Proximity and Hands-Free Reading Heads on the same system, with the same access cards and tags, we offer the best of both worlds.

PR100 Mullion Mount Proximity Reading Head

Our mullion mount Proximity Reading Head is narrow enough to mount on any doorframe and gives up to 40cm read range. Competitive price, modern aesthetics and excellent performance make the PR100 our most popular Proximity product.



HD100-2 Heavy Duty Proximity Reading Head

A rugged Heavy Duty Proximity Reading Head with stainless steel surround to improve operating life in harsh environments. Performance is not compromised with up to 30cm read range available. With all of the electronics safely sealed in solid plastic, the tough HD100-2 is ideal for siting outside your building in the most exposed environments.



SP100 Switch Plate Proximity Reading Head

The Switch Plate Reading Head is designed to mount on a single gang flush mounting electrical back box. This facilitates ease of installation by allowing standard electrical tools and fittings to be used. Performance is excellent with up to 40cm reading range available.



PM100 Panel Mount Proximity Reading Head

The Panel Mount Proximity Reading Head is designed for fitment into 3rd party enclosures, such as Door Entry Phones. Compact and tough, it can still give excellent performance, with a reading range of up to 28cm even when mounted in a steel enclosure.



Custom Finished Covers

To meet the requirements of modern architects and specifiers Bewator has introduced a comprehensive range of Custom Finished Covers, with styles to complement any building's interior. Available for HF100, PR100 & SP100 Reading Heads. Stand out or blend In – the choice is yours

Cards & Tags - Active



The 928 Active card has defined the standard for Hands-Free access control. A battery life of up to 14 years means that these cards will often outlive their passive counterparts.



The 911 keyring tag is a fully potted polycarbonate Active tag. You never leave it at home, and in the office it never needs to leave your pocket!



Our 940 and 942 Wrist tags are generally used in the healthcare environment. Fully potted with polycarbonate shells, they can easily be disinfected and there is a choice of secure or buckle strap.



Our 970 tags are heavy duty powerful tags for vehicle tagging and control. With battery life of up to 10 years, they will probably outlive the car!



The 944 Asset Tag are designed to be attached to valuable portable items. Virtually unbreakable, once attached, they provide a visible deterrent to theft.

Cards & Tags - Passive



The 961 is a passive Keyring tag. It is robust and lightweight providing a highly cost effective solution for general access control applications. If you don't leave home without your keys, you won't leave home without your tag!



Multifunctional 958 cards are ISO laminated, credit card size and can be used to combine passive Proximity with Magnetic Stripe and/or Smart Card Technology. The surface is white and designed to be printed on for extra visual identification.



The 968 is our most popular passive card or tag. Exceptional value for money yet still delivering up to 30cm of read range, this is the card for most general purpose access control applications!

Your local Bewator distributor is:

Sonic Security Services Ltd
Units 5 & 3 Grange Road Business Est, Grange Road
Geddington, Kettering, Northants, NN14 1AL
TEL 01536 461200 FAX 01536 461200
www.sonicsecurity.co.uk sales@sonicsecurity.co.uk



BEWATOR AB, BOX 1275, SE-171 24 SOLNA, SWEDEN
Visiting address: Englundavägen 7
Tel: +46 8 627 00 95 (Switchboard)
Tel: +46 8 627 00 85 (Customer Service). Fax: +46 8 627 00 96
www.bewator.com E-mail: info@bewator.com

